

A man in a blue suit with arms crossed, standing in front of a blurred cityscape.

# WHAT ARE THE CHALLENGES OF CLOUD-BASED SOLUTIONS

BiCA AG, Stefan Gübeli



# BICA PROFILE

WELCOME TO THE CIRRUS WORLD

# WHEN & WHERE

## BiCA Profile

BiCA founded in **1962**, about **180 employees** and since 1997 part of the Lantzerath-Group.

Affiliates with **R&D responsibilities** (competences) in **Switzerland, Austria, USA, Poland, and Sweden**.

Doing business in **Switzerland, Germany, Austria, France, Belgium, The Netherlands, Luxembourg, and USA**.

Developing and providing software **solutions** and “cloud” **since more than 25 years**.

# WE ARE THE CLOUD SPECIALISTS

# MISSION

BiCA Profile

## “WE PROVIDE ADDED VALUES”

BiCA offers a highly scalable cloud POS solution and brings customers real added value by combining various **INDUSTRIES SCHEMES** in **ONE HOLISTIC** business **PLATFORM** – independent of local **hardware** and **OS** platforms.

**RETAIL**

**FUEL**

**HOSPITALITY**

**CARWASH**

**E-MOBILITY**

**CiRRUS**  
BUSINESS SOLUTION



**“YOU WILL LOVE  
WHAT WE DO!”**

# CLOUD CHALLENGES

GENERAL & CIRRUS



# CIRRUS MAIN ARCHITECTURE

## Cloud Challenges

---

### INTEGRATION

Using SDK the CiRRUS API/REST Interfaces and customizing of the UI is made available and full integration in the customer's ecosystem.

---

### STANDARD INDUSTRY SCHEMES MODULES

The solution portfolio includes FORECOURT, TABLE MANAGEMENT, SELF-CHECKOUT, etc. as standard scope of delivery.

---

### APPLICATION CORE / CIRRUS BUSINESS

The CiRRUS Business Solution comes with standard modules like POS, PRICE & PROMOTION, STOCK MANAGEMENT, etc.

---

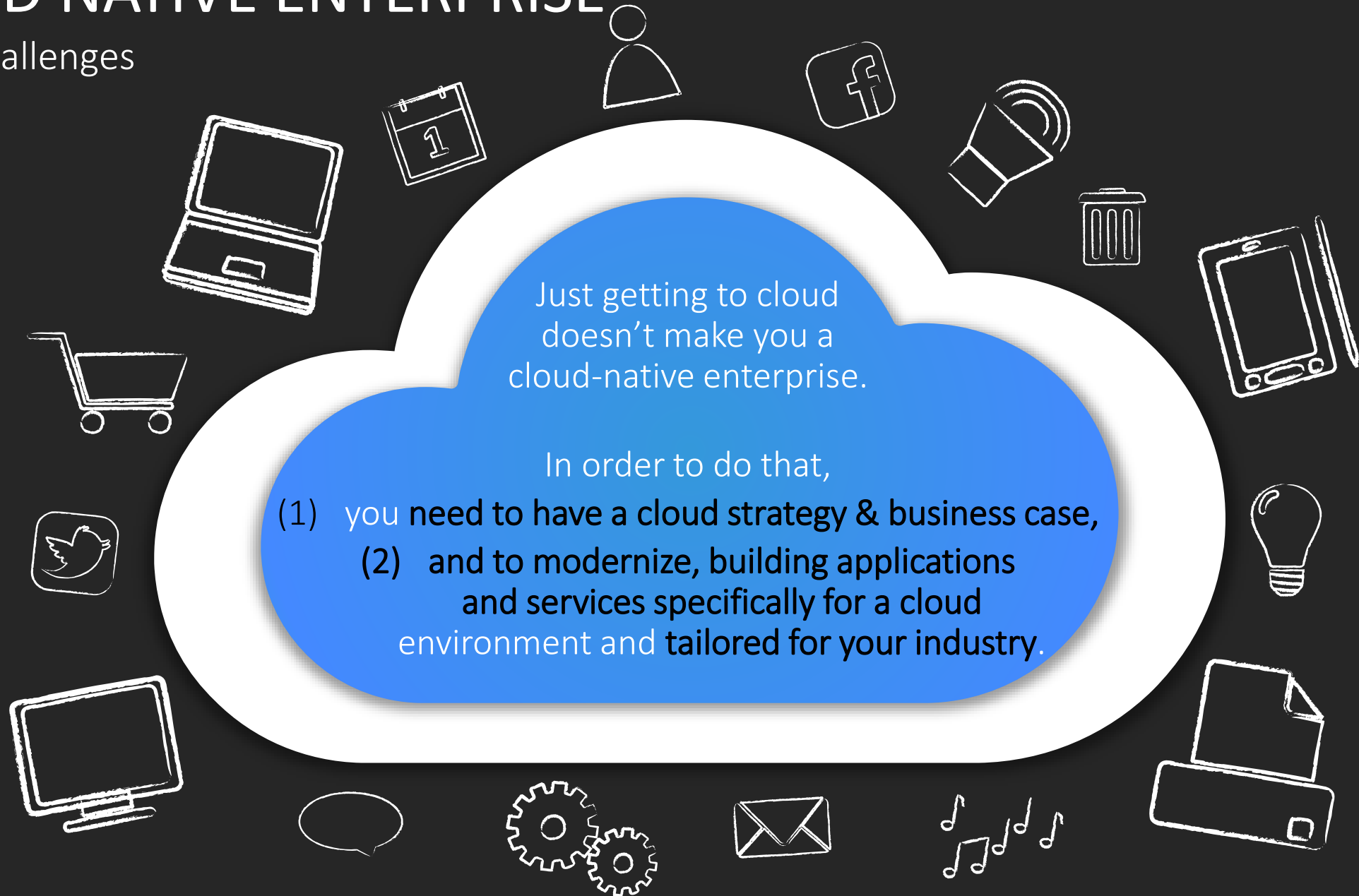
### PLATFORM

Microsoft AZURE with data base service, storage, event hubs, IoT Hub, etc.



# CLOUD NATIVE ENTERPRISE

## Cloud Challenges



# CLOUD OPERATIONS

## Cloud Challenges

---

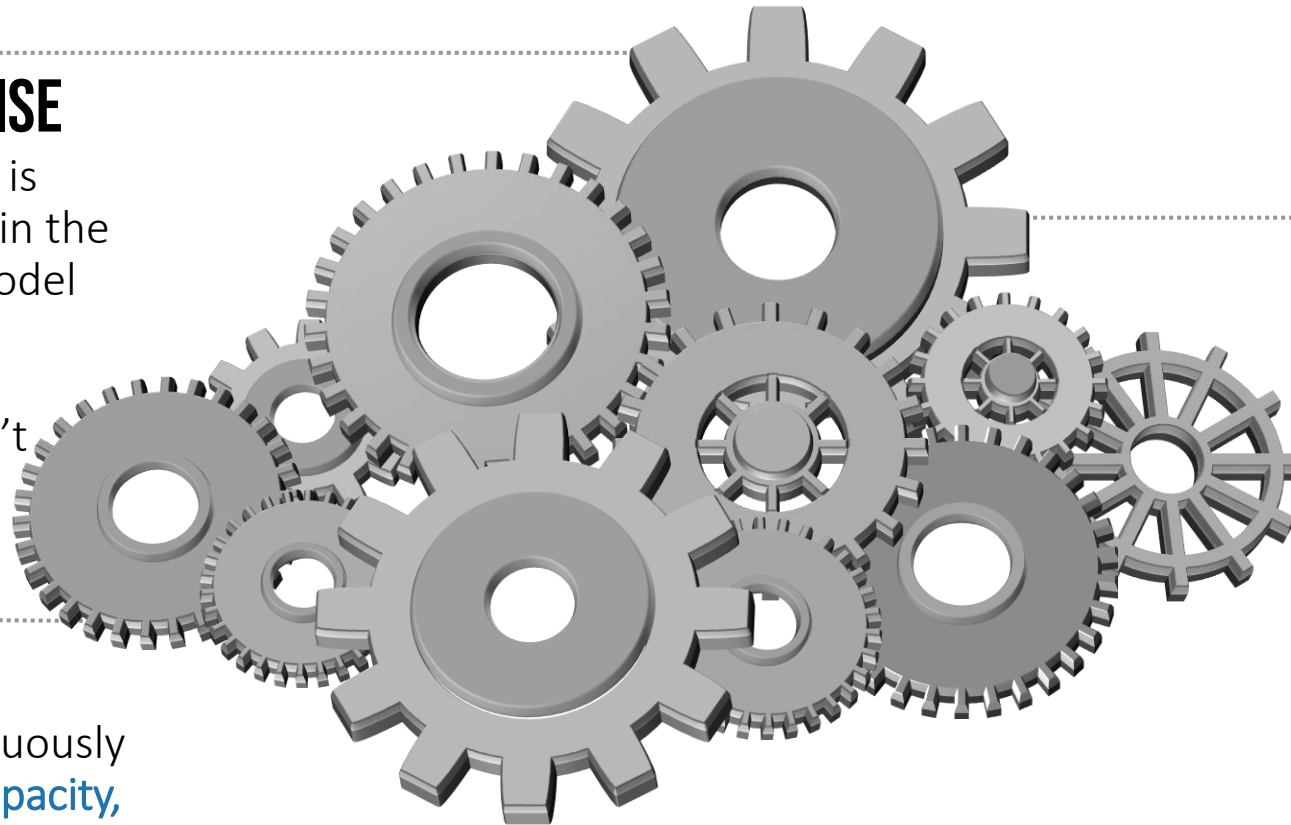
### OPERATING ON PREMISE

Operating your IT estate is fundamentally different in the cloud. The traditional model of **managing capacity by purchasing and running physical hardware** doesn't work.

---

### OPERATING CLOUD

Instead, you must continuously **manage consumption, capacity, performance**, and crucially—**cost**. It requires a very **different skillset** as well as new operational functions.



---

### PROACTIVITY

**You've got to be proactive.**

You need people who don't just react to spikes in consumption, but understand and anticipate why they're happening and what's the impact. They **need to know what business processes are involved, how critical they are and how they all fit together.**

# FULL POTENTIAL

## Cloud Challenges

- Cloud lets you spin up **new environments instantly**, **try out several ideas at once**, and **see what's working quickly and securely**.
- It's about iterating faster, testing out **prototypes** on demand and getting **real-time information** on which to base your business decisions.
- Software release management and deployment become fast and with this **time-to-market** as well.

*All of your workloads*



### **CLOUD IS NOT NEW**

But to realize the full business value and potential of a cloud, you need to **migrate the majority of your workloads** to the cloud.

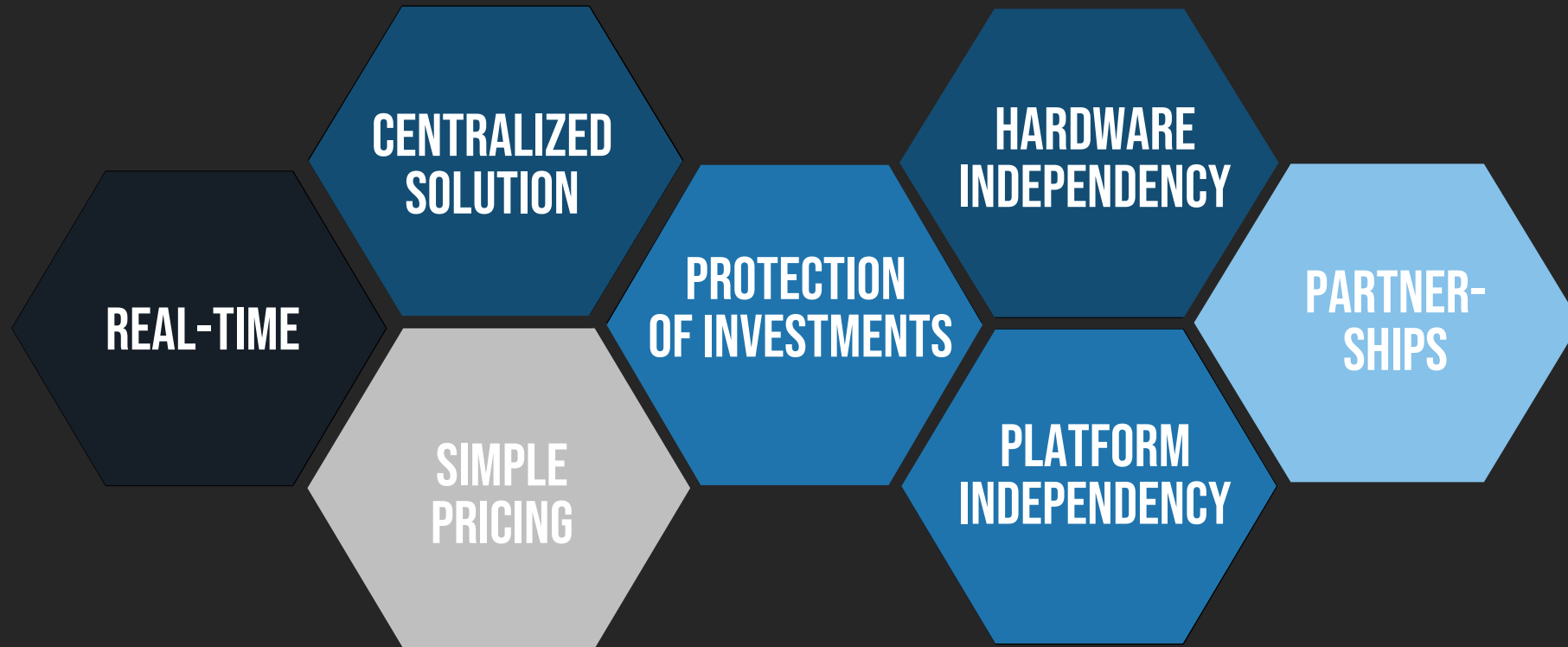
# MOST COMMON CLOUD CHALLENGES

Cloud Challenges



# CiRRUS SPECIFIC CHALLENGES & USP<sub>s</sub>

Cloud Challenges



**CiRRUS**

# KEY TAKE-AWAYS

## Cloud Challenges



### CLOUD NATIVE

Mindset of everybody, cloud specific applications, tailored for your industry, structure follows strategy



### TECHNOLOGY DECISION

Choose the right technology and partners based on your own business



### STANDARD SOLUTION

Try to development a standard product which modules far away from the core for customization – product and not project driven.

### CIRRUS BUSINESS SOLUTION

Brings you all the mentioned experience and lessons learned in one holistic cloud solution to empower your own business.

*Key take-aways*



A photograph of four office professionals in a modern setting with large windows and blinds. A woman with glasses on the left holds a tablet. A man in the center sits at a desk, looking at a large document. A woman with red hair stands with her arms crossed, looking down. A man in a blue shirt stands on the right, holding a pen and looking towards the others. The scene is dimly lit, with light coming from the windows.

# Q&A

## Cloud Challenges

# CONTACT US – BOOTH 5A30

BiCA AG



**STEFAN GÜBELI**

COO

Buzibachstrasse 45  
4023 Rothenburg,  
Switzerland



+41 79 833 8689



[sgu@bica.ch](mailto:sgu@bica.ch)



[www.cirrusoft.com](http://www.cirrusoft.com)

The background of the entire slide is a dark, textured surface covered with numerous water droplets of varying sizes. The droplets are illuminated from below, creating a soft, colorful glow in shades of teal, blue, and red. The overall effect is a sense of freshness and global connectivity.

**CiRRUS**

Cloud POS without boundaries

**THANK YOU**