



HELLONEXT

POWERED BY **Petrotec**

TOWARDS A GREENER FUTURE



THE PETROTEC GROUP



www.hellonext.world

Developing solutions for our customers.

Petrotec is a multinational company leader in the retail fueling business, with more than **3 decades** of experience in the mobility market. Hellonext is part of the Petrotec Group.



GLOBAL PRESENCE IN
4 CONTINENTS



DIRECT OPERATIONS IN
10 COUNTRIES



EMPLOYEES WORLDWIDE
> 1.150



INTERVENTIONS A YEAR
> 150.000



PETROTEC GROUP
INCORPORATES
20 COMPANIES WORLDWIDE



INSTALLED CAPACITY
3 INDUSTRIAL UNITS



BOOTH 5B40



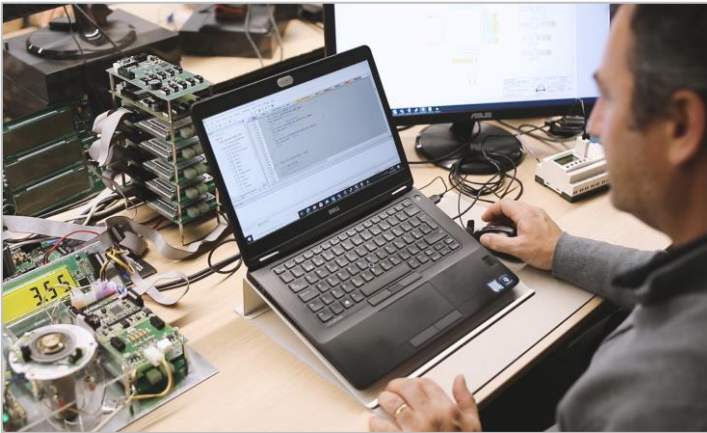
Oil & Gas Dispenser

- O&G dispensers → More than 3.500/year;
- GPL dispensers → More than 200/year;
- Electric chargers → +2.000 installed (70% fast-charge);
- Electric Charger Factory → North Portugal
- Payment and identification solutions;
- Wetstock management.



BOOTH 5A50

Electric Charger
[new 480 kW]



Engineering & Development:

- Knowledge areas: Mechanical, electrical, electronic, systems & development;
- Working on hydrogen projects (P2M and P2G);
- Perform Risk Assessment for all H₂ projects.

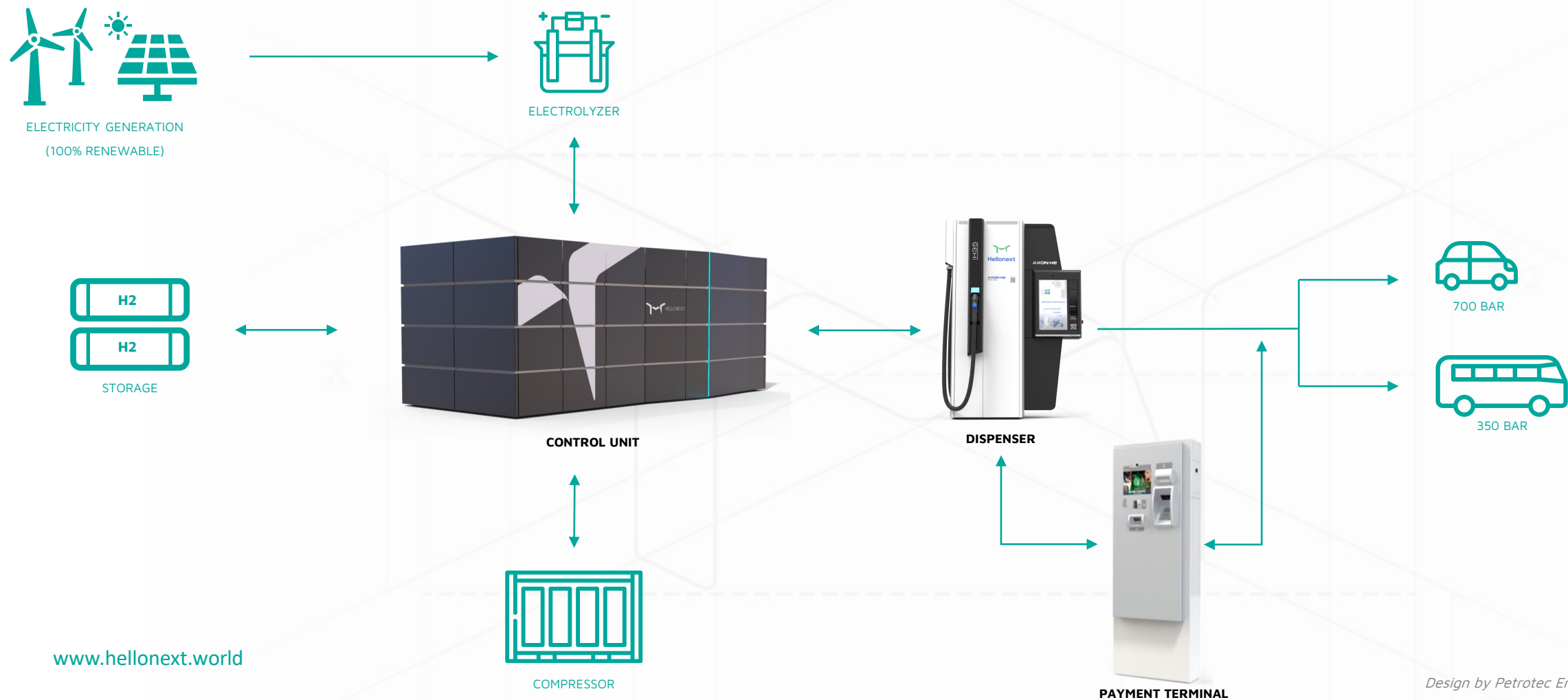


Maintenance & Services:

- Maintenance and services (assistance 24/7);
- EPC Projects;
- Transition team for hydrogen and e. mobility.

Entire value chain for green hydrogen:

- POWER-TO-MOBILITY (**P2M**) → Hydrogen Refueling Stations (HRS);
- POWER-TO-GAS (**P2G**) → Injection of H₂ in the natural gas network;
- POWER-TO-INDUSTRY (**P2I**) → Replacement of natural gas;
- POWER-TO-SYNFUEL (P2FUEL) → Use as synthetic fuels;
- POWER-TO-POWER (P2P) → Storage H₂ for energy production.





CONTROL UNIT



DISPENSER

+ All the engineering and construction

AXON H₂:

- Filling H35 and H70;
- Compliance with SAE: J2601 and J2799;
- Break-away system;
- Coriolis mass flow meter;
- Tilt switch and emergency stop button;
- User Interface with full multimedia display 27";
- Certifications:

CE, ATEX, PED, HGV 4.1, HGV 4.3, SAE, ISONFPA2, NFPA 70, OIML R139, ISO 19880.







Dimensions & Specifications:

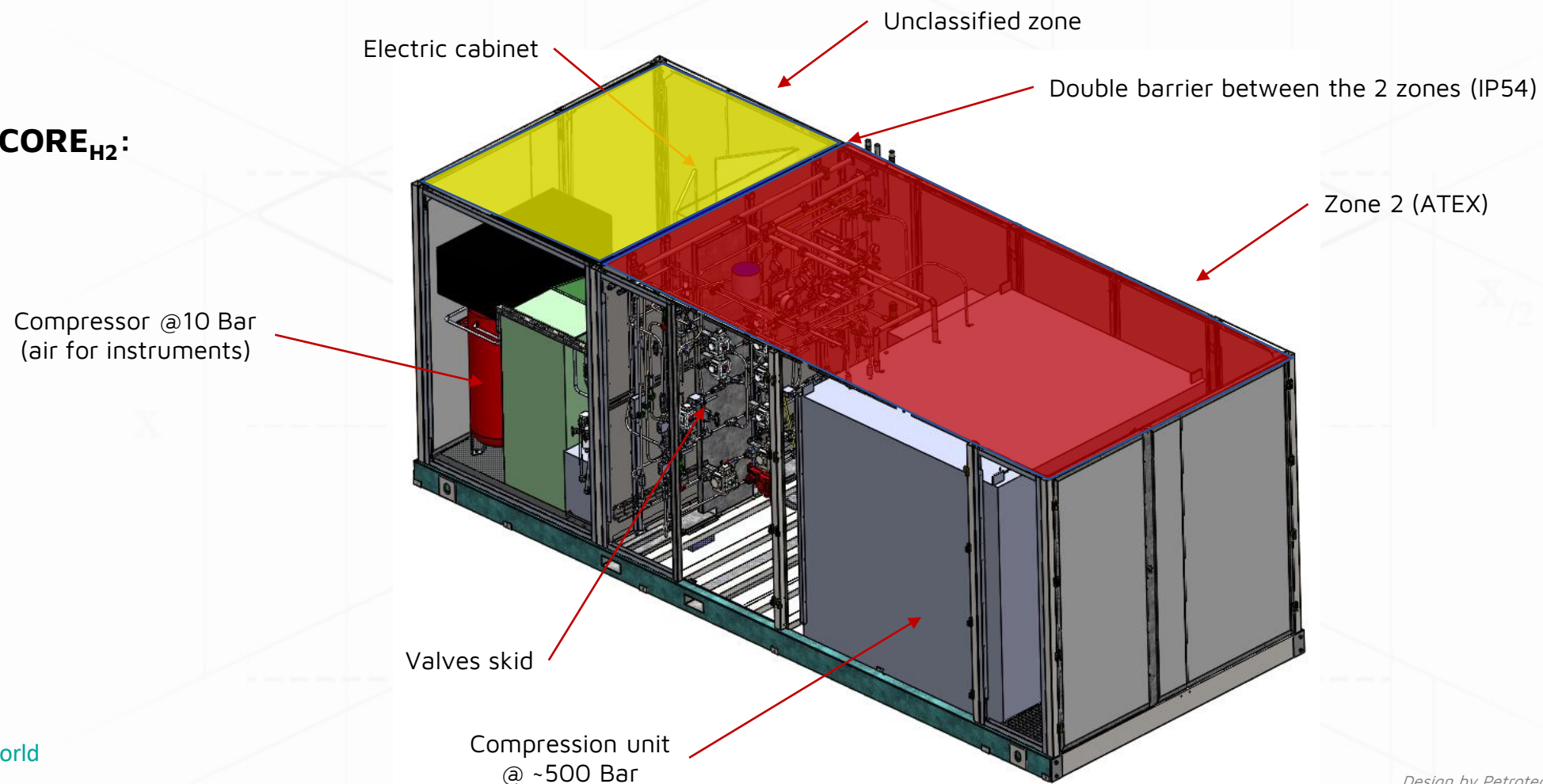
Main Features	H35	H70	H35 & H70
Max. N° Slides	1 or 2	1 or 2	2
Max. N° Displays/Slide	1	1	1
Max. N° Filling Points	2	2	2
Max. N° Hoses	2	2	4
Oriented Hoses/ Nozzles Island	Island Lane	Island Lane	Island
Hose Connection	WEH	WEH	WEH





With CORE H₂ you can customize your solution...

Inside the CORE_{H2}:



Main features of the CORE_{H₂}:

- Management of all equipment's: electrolyzer, compressors, storage, etc.);
- UPS for back-up during 24h;
- Double barrier between the 2 zones (IP54);
- Blow-out panel;
- Standards & Recommendations:
 - ISO19880-1; IEC60079-10; EN1127-1; EN60079-46; EN60204-1

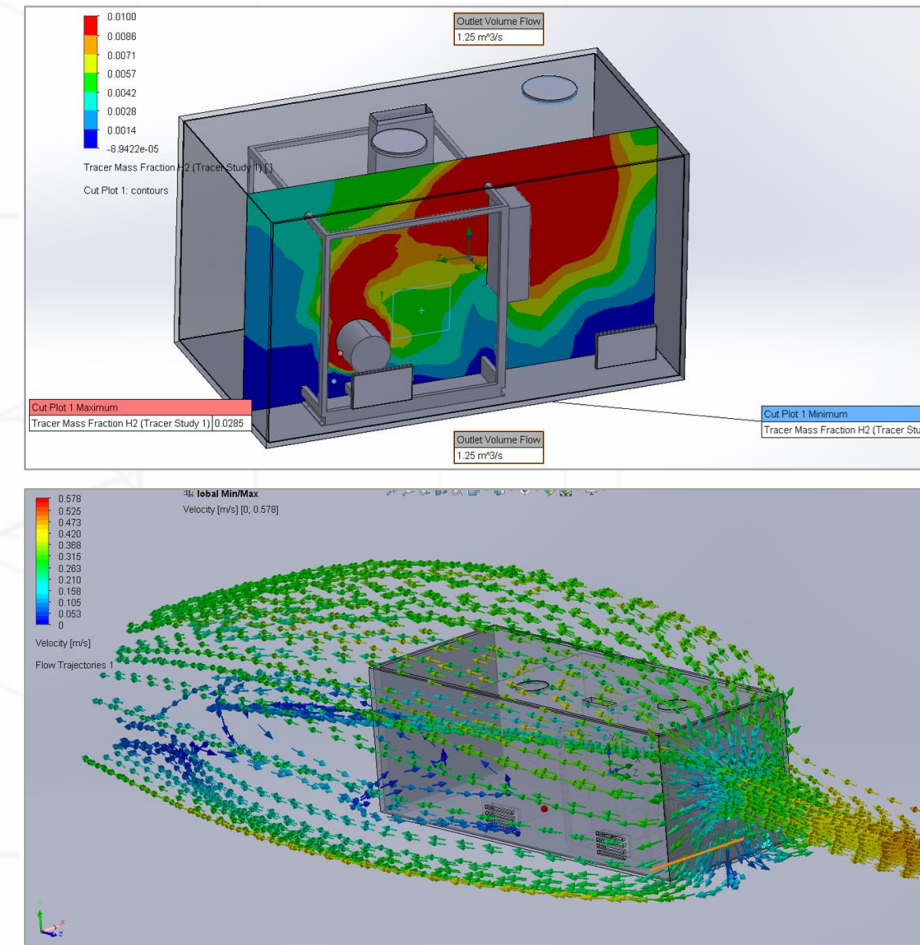


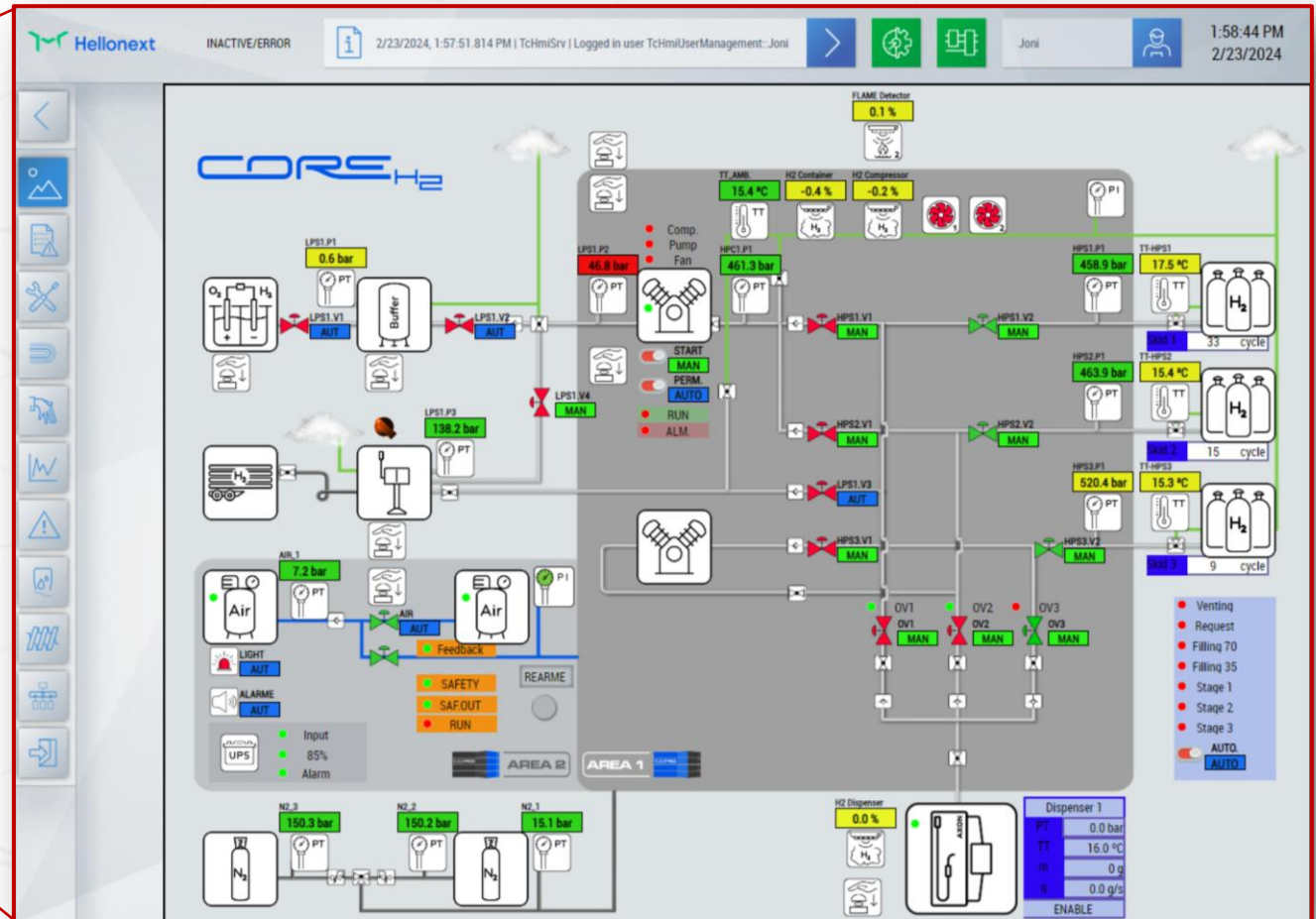
Main features of the CORE_{H2}:

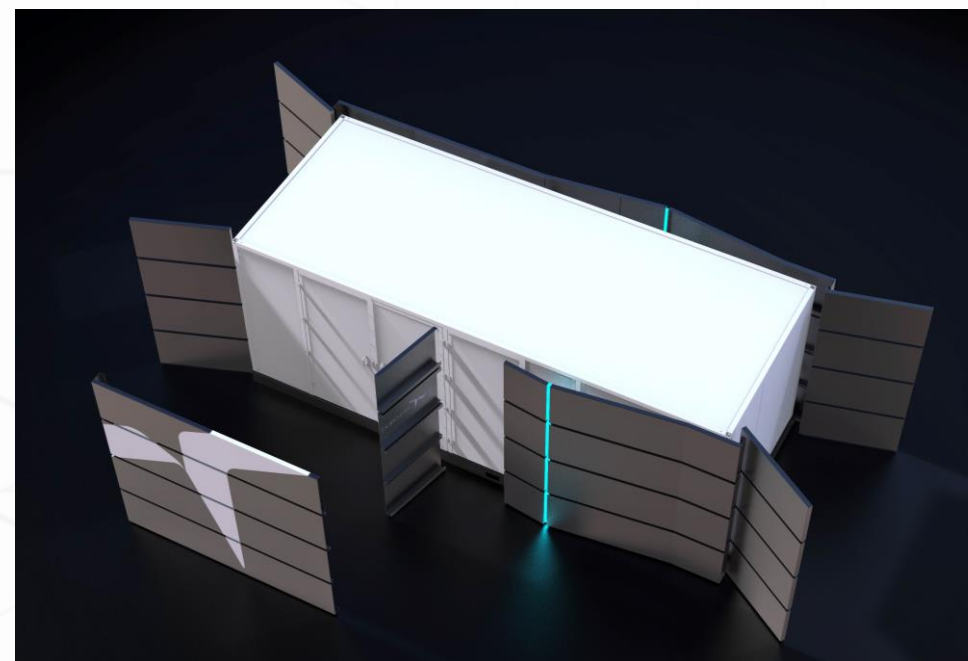
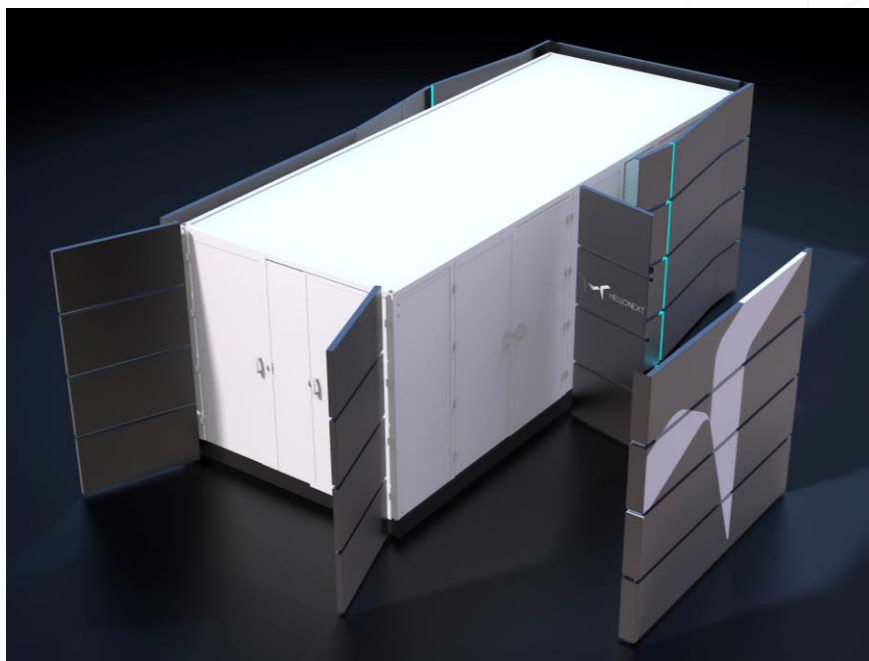
- Study CFD^[1] of potential leaks inside the CORE H₂;
- H₂ extractors;
- Internal and external risk analysis;
- Sensores:
 - Catalytic (inside the CORE H₂);
 - Flame where exist human presence (trailer and dispenser).

CORE_{H2}

RISK ASSESSMENT

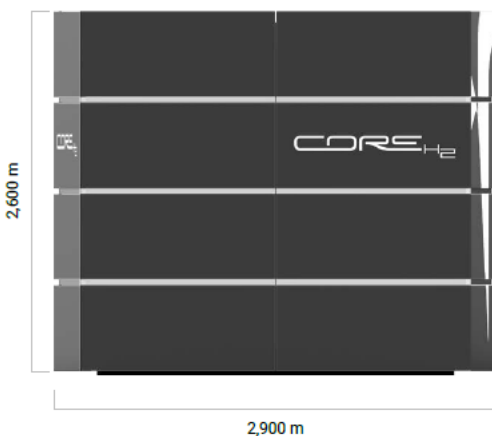








Dimensions & Specifications:



N° Daily/Kg	Pressure	Type	Size
200	H70	1FP	Small
200	H35	1FP	Small
200	H35 + H70	2FP	Small
400	H35	1FP	Medium
400	H35 + H70	2FP	Medium
1,000	H35	2FP	Big
1,000	H70	6FP	Big
1,000	H35 + H70	3FP (2H35+1H70)	Big



CORE_{H₂}

DISCOVER ME...



www.hellonext.world

BOOTH 5A50



First Project

HRS - GUIMARÃES



CÂMARA
MUNICIPAL DE
GUIMARÃES







⚠ DANGER

Hydrogen

Proibido fumar ou fumar

ATENÇÃO

ACESSO RESTITO SÓMENTE PESSOAS AUTORIZADAS

THIS BUS MOVES ON HYDROGEN!



HELLONEXT

POWERED BY **Petrotec**

LET'S WALK TOWARDS A GREENER FUTURE TOGETHER

info@hellonext.world

ricardo.g.esteves@hellonext.world

M: +351 927 501 499